

# Products and Services

OEM AND INDUSTRIAL AIR HANDLING SPECIALISTS

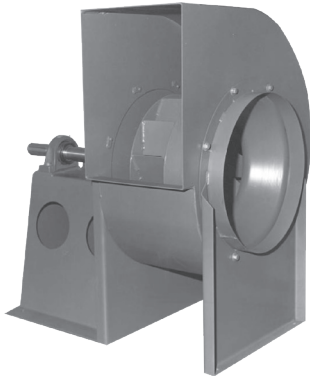
CINCINNATI FAN 



**Industrial Fans Built to Deliver**

Superior Products • Excellent Service • On-time Shipments

# Centrifugal Fans



## Model HDAF: Airfoil Fan

- Capacities up to 48,551 CFM and 21" SPWG
- Use for delivery of high air volumes at maximum efficiency
- Available with two wheel designs and in multiple widths from 50% to 100%
- Airfoil blade wheel is fabricated of high-strength steel to assure long lasting, efficient operation
- AMCA Class II and III construction
- Belt or direct drive arrangements available



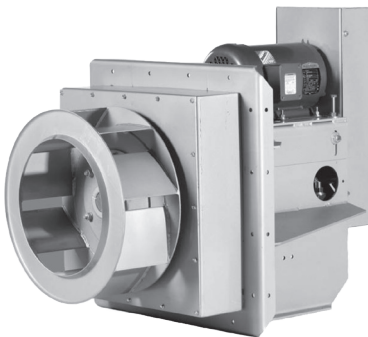
## Model HDBC: Backward Curved Fan

- Capacities up to 270,000 CFM and 34" SPWG
- Use for efficient delivery of high air volumes
- Available with one wheel design and in multiple widths from 50% to 100%
- Continuous welded housings, instead of lock seams, eliminate air leakage
- AMCA Class V construction
- Belt or direct drive arrangements available



## Model HDBI: Backward Inclined Fan

- Capacities up to 150,000 CFM and 25" SPWG
- Use for efficient delivery of high air volumes
- Available with three wheel designs and in multiple widths from 50% to 100%
- Most models have housings that can be rotated in 45° increments in the field
- AMCA Class II, III and IV construction
- Belt or direct drive arrangements available



## Model CPAF: Airfoil Plug Fan

- Capacities up to 42,000 CFM and 18" SPWG
- Use for ovens, dryers or dust collectors with or without fan housing
- Available with two airfoil wheel designs and in multiple widths from 50% to 100%
- Can be provided with insulated plug boxes for extreme temperatures
- AMCA Class II and III construction
- Belt or direct drive arrangements available



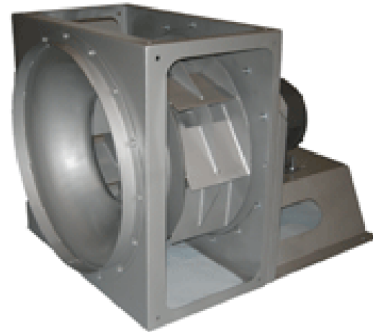
## Model CPF: Backward Inclined Plug Fan

- Capacities up to 100,000 CFM and 25" SPWG
- Designed to efficiently deliver large volumes of recirculated air
- Available with three wheel designs and in multiple widths from 50% to 100%
- Extended fan shafts extend the wheel through insulated oven walls up to 6" thick
- AMCA Class II and III construction
- Belt or direct drive arrangements available



## Model LM & LMF: Volume Fan

- Capacities up to 2,000 CFM and 4" SPWG
- Use to produce a large volume of air at low noise levels and low horsepower
- All models have forward curve wheels
- Standard with cast aluminum blower housings and steel, multi-vane wheels
- Available for base or flange mounting



## Model PL: Airfoil Plenum Fan

- Capacities to 33,000 CFM and 25" SPWG
- For efficient delivery of high air volumes in contained air handling systems
- Available with four wheel designs and in multiple widths from 50% to 100%
- Can be assembled in banks, easily replacing one large fan in a tight space
- All aluminum or stainless steel construction available



## Model SQAf: Airfoil Square Fan

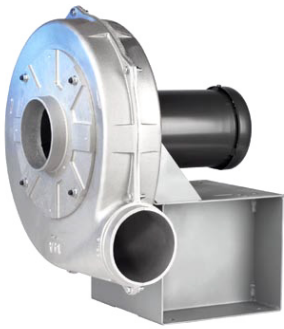
- Capacities up to 27,985 CFM and 17" SPWG
- Use for industrial cooling, ventilation and dust collection systems
- Available with two wheel designs and in multiple widths from 50% to 100%
- AMCA Class I, II and III construction
- Four discharge positions and two rotations available



## Model SQBI: Backward Inclined Square Fan

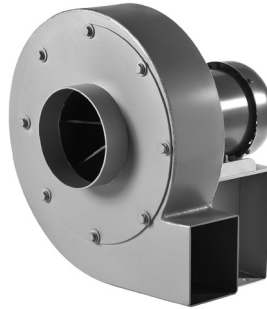
- Capacities up to 28,141 CFM and 23" SPWG
- Excellent choice for efficient delivery of high air volumes
- Available with two wheel designs and in multiple widths from 50% to 100%
- AMCA Class II and III construction
- Belt or direct drive arrangements available

# Centrifugal Blowers



## Model PB: Cast Aluminum Pressure Blower

- Capacities up to 4,500 CFM and 20" SPWG
- Use for OEM and industrial cooling, conveying and pressurizing applications
- Eight housing sizes, multiple inlet and wheel sizes are available
- Cast aluminum, spark resistant, self-cleaning wheels
- AMCA Type B spark resistance is standard



## Model PBS: Fabricated Steel Pressure Blower

- Capacities up to 4,462 CFM and 20" SPWG
- Welded 10-gauge steel housings and wheels
- All housings can rotate in 90-degree increments for flexibility in the field
- All models are available with multiple wheel sizes and four models are available with multiple inlet sizes
- Available in both direct and belt driven arrangements



## Model SPB: Die-Formed Steel Pressure Blower

- Capacities up to 4,075 CFM and 18" SPWG
- All models are standard with rugged die formed steel housings
- Multiple wheel and inlet sizes on all models provide extensive performance ratings
- Round inlets and discharges easily connect to standard duct or pipe sizes with slip connections or flanges
- Available in both direct and belt driven arrangements



## Model RBE: Radial Blade Exhauster

- Capacities up to 22,528 CFM and 41" SPWG
- Use for material conveying or higher pressure/higher volume applications
- Rugged steel, aluminum or stainless steel construction
- Multiple-width housings and multiple-width wheels to deliver exacting performance
- Available in AMCA A, B, or C spark resistant construction



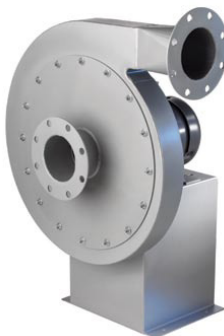
## Model RTE: Radial Tip Exhauster

- Capacities up to 240,000 CFM and 35" SPWG
- Use for bag houses, precipitators, solvent recovery, kiln exhaust and induced draft for boilers
- Provides highly efficient performance for applications in clean and dirty air systems
- Exhibits self-cleaning blade characteristics typical to radial bladed wheels
- AMCA C spark resistant and available in mild steel, 304/316 stainless steel and AR400 abrasive resistant steel



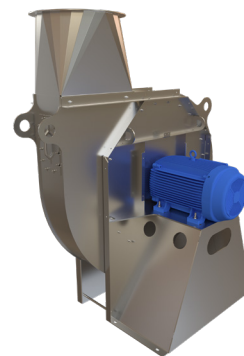
### Model HP-I: High Pressure Blower

- Capacities up to 1,200 CFM and 30" SPWG
- Use for combustion air, blow off, conveying and higher pressure applications
- Includes spark resistant, cast aluminum or optional fabricated steel wheels
- Continuously welded, 10-gauge steel housing and Teflon shaft seals prevent air leakage
- Blower housing is reversible and rotatable in 45° increments



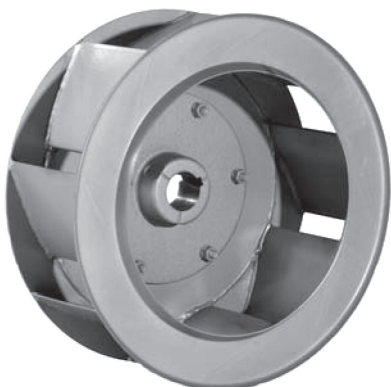
### Model HP-II: High Pressure Blower

- Capacities up to 7,000 CFM and 78" SPWG
- Two different wheel designs are available, including one with a continuously rising pressure characteristic for assured stable operation to complete shut off
- Includes spark resistant, cast aluminum or optional fabricated steel wheels
- Available in all aluminum or all stainless steel construction
- Blower housing is reversible and rotatable in 45° increments



### Model HPBC: Backward Curved High Pressure Blower

- Capacities up to 96,000 CFM and 80" SPWG
- Use for combustion air, ejector air supply, glass blowing and cooling, pneumatic conveying and gas boosting
- Highly efficient performance where a higher pressure to flow ratio is required
- Available in both belt and direct drive
- AMCA C spark resistant and available in mild steel and 304/316 stainless steel



### Replacement Fan and Blower Parts

Cincinnati Fan extends the same commitment to replacement fan and blower parts as it does to new fans—to provide quality parts in the shortest time possible. Many genuine Cincinnati Fan parts are available in as little as 24 hours, including both cast aluminum and fabricated wheels. Also available in 24 hours are most inlet bells, shafts, bearings, and belt drive components.



# Axial Fans · Dust Collectors · Fume Exhausters

## Model BAF, TAF, WAF, WAF/HTF, HTF, DDF, DDF2.0: Tube Axial Duct Fan

- Capacities up to 44,500 CFM and 10" SPWG
- Use for paint spray booth exhaust, duct booster and general ventilation
- Cast aluminum, spark resistant propeller



## Model AC: Air Circulator

- Capacities up to 19,000 CFM
- Use for people, process and machinery cooling
- Open Drip Proof, continuous duty, ball bearing motors
- Spark resistant, cast aluminum propeller



## Model PF: Propeller Fan

- Capacities up to 38,650 CFM and 3/4" SPWG
- Use for general ventilation
- Heavy-duty panel and motor support base
- Direct drive



## Model PMC & CIM: Personnel Cooler

- Capacities up to 28,490 CFM
- Use for people, process and machinery cooling
- Designed for continuous duty in rugged environments
- Spark resistant, cast aluminum propeller



## Dust Collectors: Dust-Master

- Portable units up to 1,300 CFM and 10" SPWG
- High-efficiency, two-stage industrial construction
- Continuous-duty, TEFC motor
- Dust bag filtration down to 1 micron



## Portable Fume Exhauster

- Capacities up to 985 CFM and 9.8" SPWG
- Exhaust dirty, contaminated air from welding, brazing, soldering and etching operations
- Supply fresh air to tanks, manholes and confined areas
- Spark-resistant construction—continuous-duty TEFC motor
- Portable or stationery mount



### LM-10 Special

Belt drive fan with special base design.  
Special coating in and out to resist detergent.



### CPF-130 Special

85% width fan, special color match paint and  
a fan panel with additional access ports.



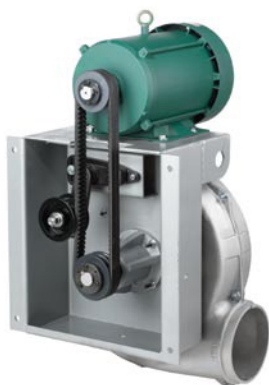
### SPB-9 Special

Customized inlet filter and inlet/discharge  
connectors on double blower with a more  
compact, multi-function blower.



### HP-8D21 Special

Special 45° angle mounting base allows larger  
blower, capable of higher suction pressure, to  
fit under a standard table-top height.



### PB-15A Special

Modified belt drive blower with drives and  
idler pulley enclosed in support base for  
mounting motor. Compact design to fit in a  
confined space.



### LMF-4 Special

Customized, cast housing has special inlet  
collar and discharge flange to match mating  
surfaces for forced air drying of ink on  
printing presses.

## Industrial Fans Built to Deliver

At Cincinnati Fan, superior products, excellent service and on-time shipments are not just promised – they are delivered. For over 65 years, your trust has been the cornerstone of our unwavering commitment to innovation, customer satisfaction and long-term solutions. Our dedication goes beyond just supplying industrial fans – it means investing in a partnership that will stand the test of time.

### Superior Products

Our commitment to excellence is evident in every step of our manufacturing process. From the selection of high-quality materials to the meticulous attention to detail in assembly, our industrial fans are built to surpass industry standards. Strict quality control procedures ensure that each fan is tested and inspected to guarantee the optimal performance, durability and reliability you have come to expect from Cincinnati Fan.

### Excellent Service

Our in-house experts and customer service personnel are dedicated to providing you with quick, reliable service tailored to meet your specific needs. They are equipped with the knowledge and expertise to offer customized solutions that add real value to your project. Additionally, our extensive network of representatives ensures that you receive unparalleled support, know-how and guidance every step of the way.

### On-time Shipments

As an industry leader in on-time delivery, we understand the need for prompt order fulfillment. That's why we ensure all standard fans are shipped within 15-25 working days. Furthermore, our Quick Ship program is designed to expedite the process, offering shipments in just 5 working days for most fans and accessories. Our commitment to timely deliveries means you can count on receiving your order right when you need it.